

Carinspecta Pre-Purchase Inspection Report

Premium Vehicle

23rd Apr,2024 / CarInspecta Sydney / CARINSPECTA_131

Complete

Booking Details

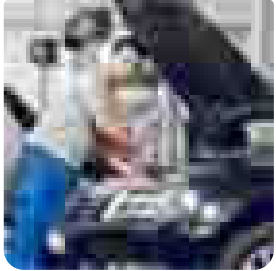
Ref No#	CARINSPECTA_131
Inspection Date	2024-04-28
Inspection By	CarInspecta Sydney
Seller's Name	sample Seller
Seller's Contact	9878988999
Vehicle Address	Victoria Road, West Ryde NSW, Australia
Buyer's Name	Sample Premium
Buyer's Contact	9878988989

Failed Items

1

Items 1 : item 1

Requires Attention



Vehicle Details

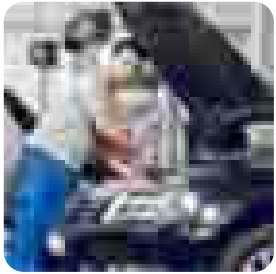
Car make	honda
Car model and Badge	cvic
Registration no.	Chabc1234
State	New South Wales
Compliance	10/2024
Colour	red
Odometer reading	sample

Engine number	123
VIN	123
Number of cylinders	1
No. of doors	2
Transmission type	Automatic
Engine Type	Internal combustion engines
Notes	Lorem Ipsum is simply dummy text of the printing and typesetting industry.

Engine & ECU Scan

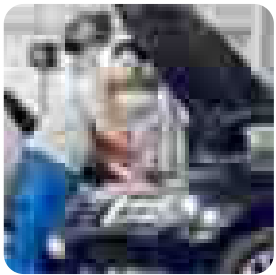
Battery test and battery terminals and bracket

Unhealthy Condition



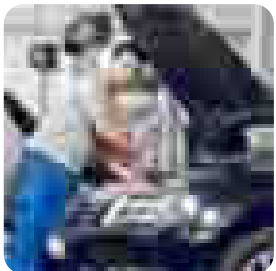
Alternator operation

Good Condition

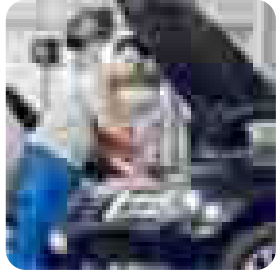


Radiator pressure test

Not Applicable

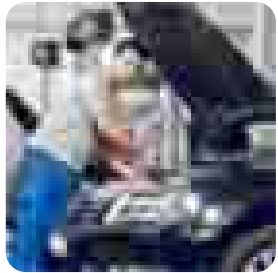


Radiator, Radiator fan and Hoses



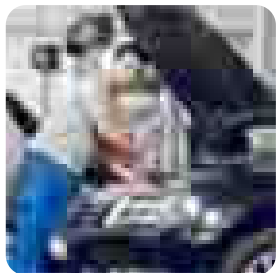
General Wear & Tear

Thermostate housing and water pump



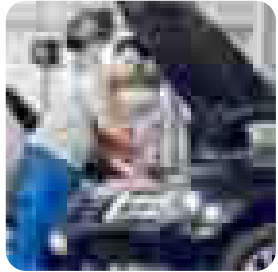
Minor Leak

Coolant condition



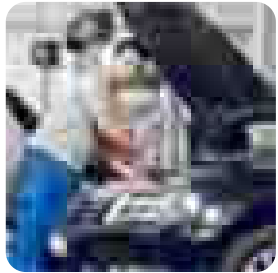
Major Leak

Heater hoses & heater core



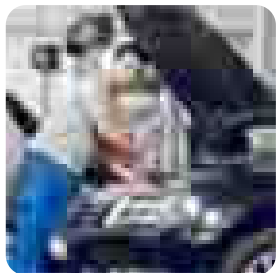
Damaged Area

A/C condenser, compressor & lines



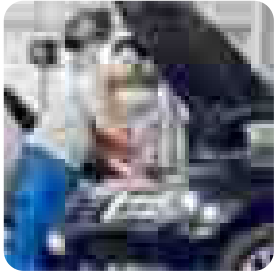
Requires Attention

Drive belt and tensioner



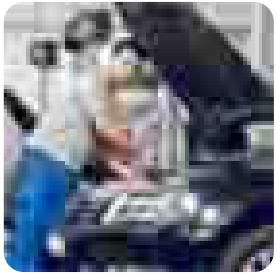
Unhealthy Condition

Power steering pump and hoses



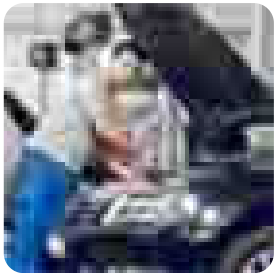
Good Condition

Fuel pump / fuel line / fuel injectors



Unhealthy Condition

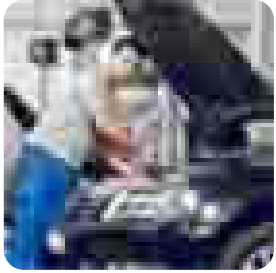
Welsh plugs



Good Condition

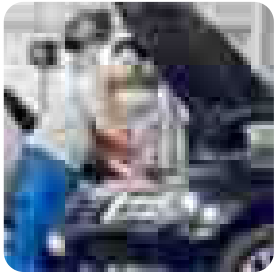
Starter motor

General Wear & Tear



Seal emission control (Visual)

Not Applicable



Intake manifold

Minor Leak

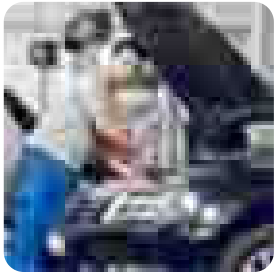


Turbo charger

Major Leak



Super charger



Engine fuse box

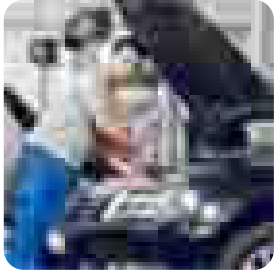


Washer bottle

Damaged Area

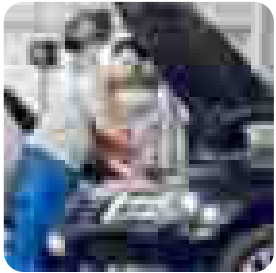
Requires Attention

Unhealthy Condition



LPG system

Good Condition



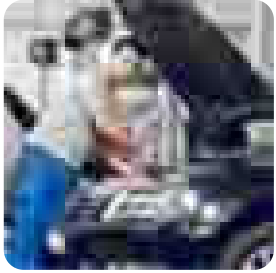
Oil cap deposit and oil condition

General Wear & Tear

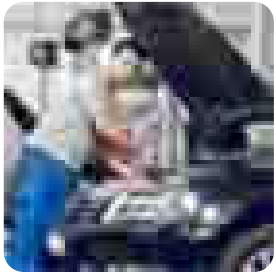


Engine oil leak

Not Applicable



Engine mounts



Misfire in engine / pressure test

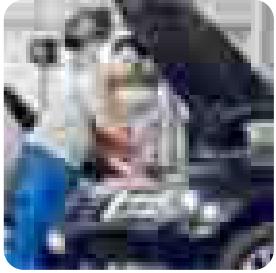


Cold / hot engine runs and engine health

Minor Leak

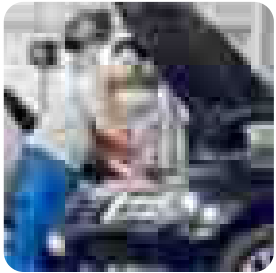
Major Leak

Damaged Area



Head gasket leakage

Requires Attention



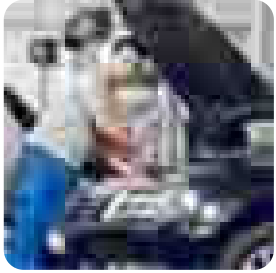
ECU Scan

Unhealthy Condition

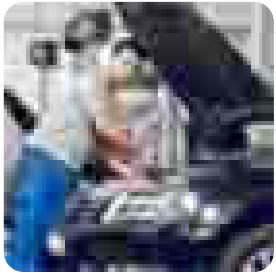


Hybrid battery condition

Good Condition



Hybrid invertor



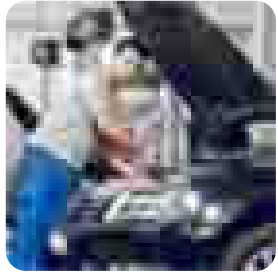
Notes

Lorem Ipsum is simply dummy text of the printing and typesetting industry.

General Wear & Tear

Drive Line

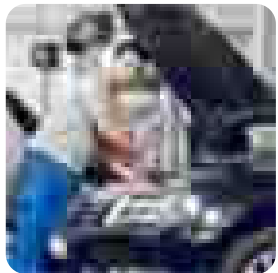
Fork speedo drive



Not Applicable

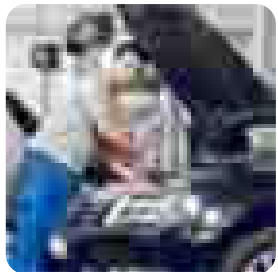
Gear Box / transmission mounts

Minor Leak



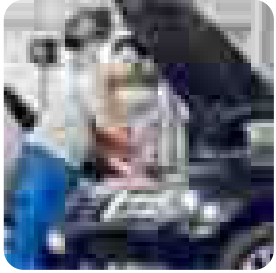
Transmission oil condition

Damaged Area



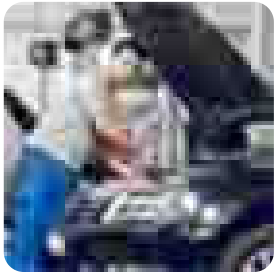
Clutch padle and slave cylinder

Requires Attention



Driveshaft and boots condition

Unhealthy Condition



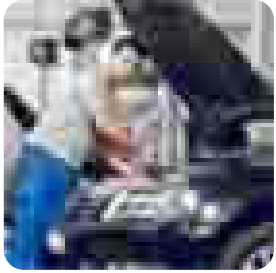
Transfer case / Front differential

Good Condition

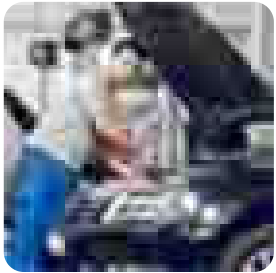


Rear differential & Tail shaft

Unhealthy Condition



Leaf / coil springs



Drive line images



Notes

Good Condition

Lorem Ipsum is simply dummy text of the printing and typesetting industry.

Exhaust, Suspension, Brakes and Steering

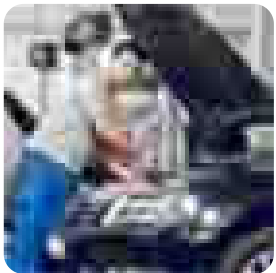
Exhaust manifold / mufflers and catalytic convertor

General Wear & Tear



Exhaust smoke

Not Applicable



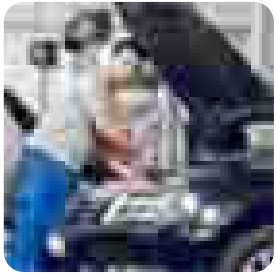
Brake master

Minor Leak



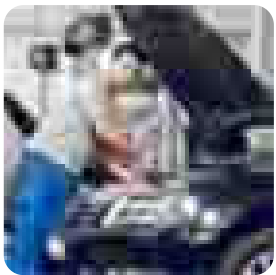
RHF tyre

Major Leak



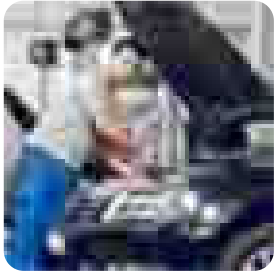
RHR tyre

Damaged Area



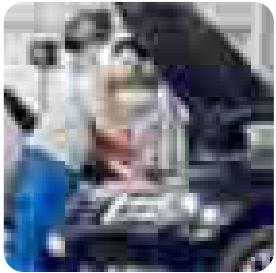
LHR tyre

Requires Attention



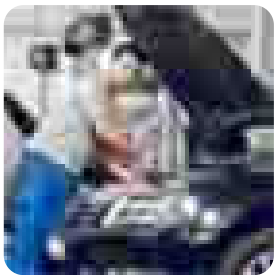
LHF tyre

Unhealthy Condition



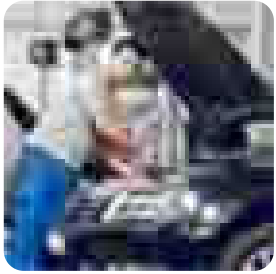
Front brake discs

Good Condition



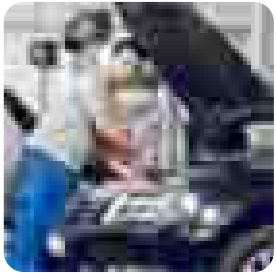
Rear brake discs

General Wear & Tear



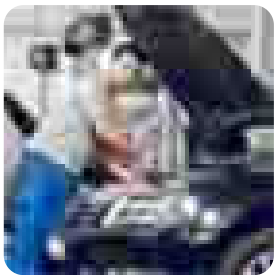
Front brake pads

Not Applicable



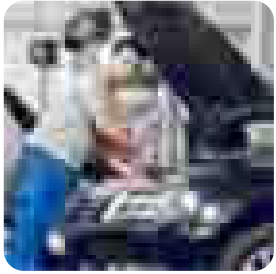
Rear disc / drum brakes

Minor Leak



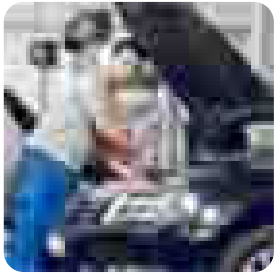
Brake caliper, cylinders and hoses

Major Leak



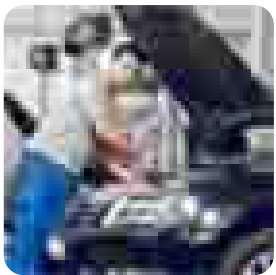
Sway bar links and torsion bar

Damaged Area



Steering knuckle / Steering arms / tie rod ends

Requires Attention



Ball joint

Unhealthy Condition



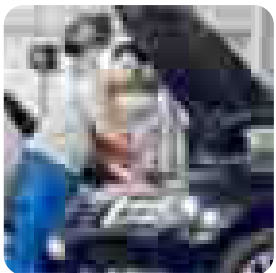
Shock absorber / struts

Good Condition



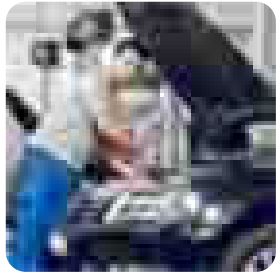
Hub assembly / wheel bearings

General Wear & Tear



Suspension bushes / Control Arm bushes

Not Applicable



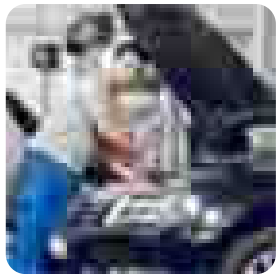
Notes

Lorem Ipsum is simply dummy text of the printing and typesetting industry.

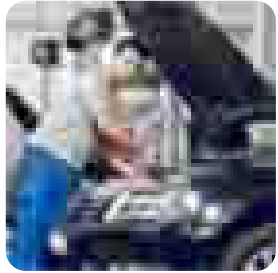
Body, Panels and Lights

Windscreen, bonnet and bonnet struts

Requires Attention

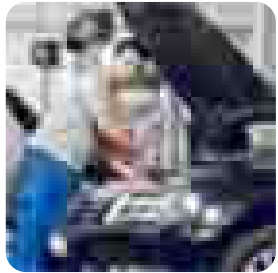


Park / low & high beam / reverse / brake/ repeater / fog lenses / globes



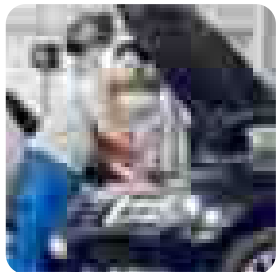
Unhealthy Condition

Side mirrors



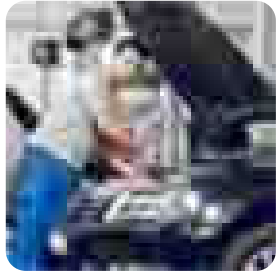
Good Condition

Door lock and keys



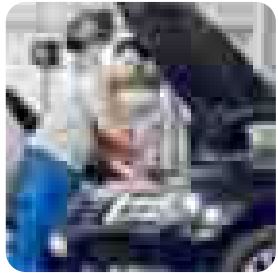
General Wear & Tear

Glass / trim / weather seals / rubber / mould strips



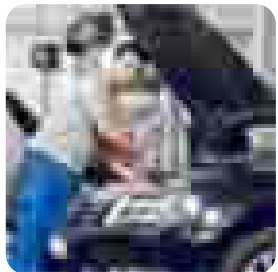
Not Applicable

Doors / Door seals



Minor Leak

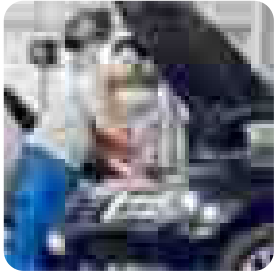
Rear bumper / Boot & tailgate struts



Damaged Area

Fuel cap

Requires Attention



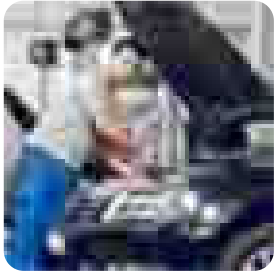
Notes

Lorem Ipsum is simply dummy text of the printing and typesetting industry.

Interior

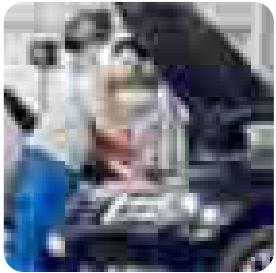
Carpet condition / floor mats / pedals / dashboard

Unhealthy Condition



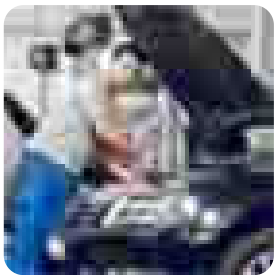
Glove box / air vents

Good Condition



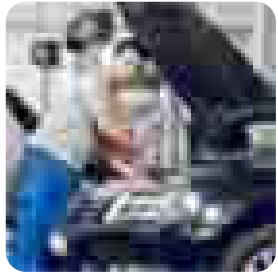
Roof lining / Sun roof

General Wear & Tear



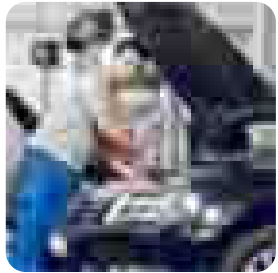
Sun visors / interior light/ Rear view Mirror

Not Applicable



Comb. switch / hazard light switch

Minor Leak

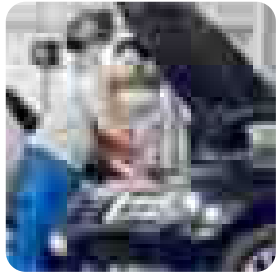


Windows operation

Good Condition

Front and rear wiper inserts / Washers

Minor Leak

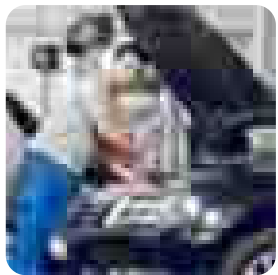


Heater operation

Unhealthy Condition

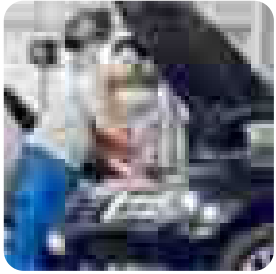
Air condition operation

Not Applicable



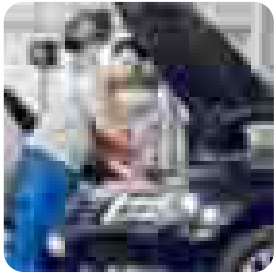
Head unit / CD Player / Radio / Navigation

Major Leak



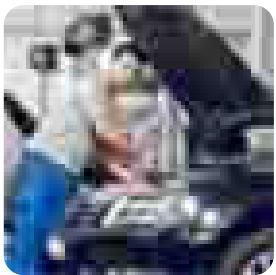
Centre consol

Requires Attention



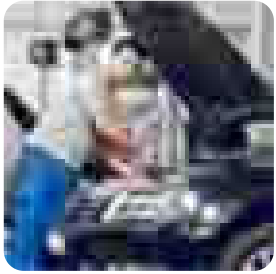
Steering wheel grip / horn

Unhealthy Condition



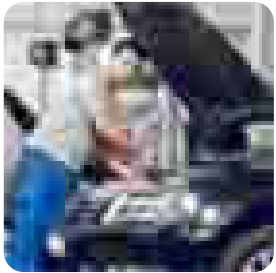
Park brake operation

Good Condition



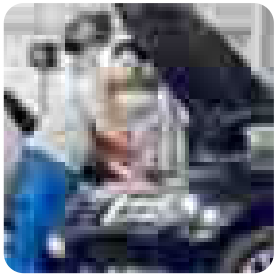
Front seat belts / rear seat belts

General Wear & Tear



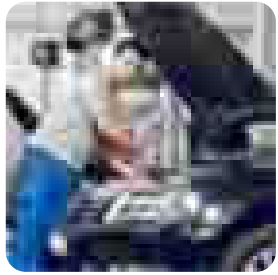
Fuel gauges / temp gauges

Not Applicable



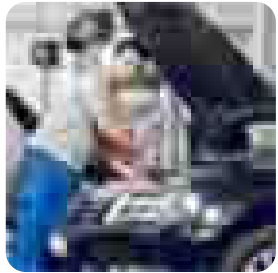
Front and rear seats heater & operation / seats condition

Minor Leak



Warning lights A.B.S. / SRS lights

Major Leak

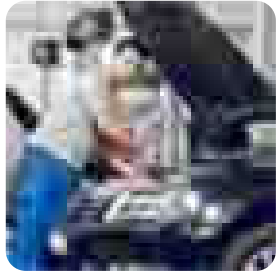


Notes

Lorem Ipsum is simply dummy text of the printing and typesetting industry.

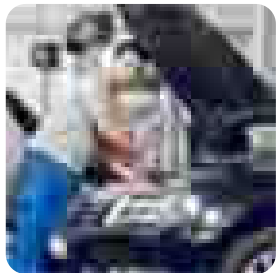
Road Test Report

Clutch / auto trans operation



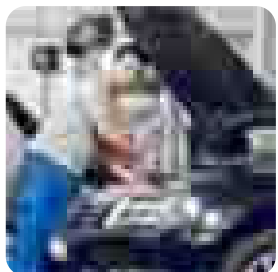
Damaged Area

Trans flare / differential whine



Requires Attention

Brake (ABS) operation & brake shudder



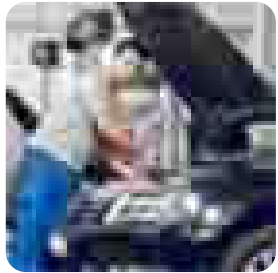
Unhealthy Condition

Road noise and handling / Wheel Alignment



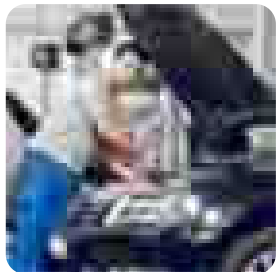
Good Condition

Driveshafts vibration / Steering vibration



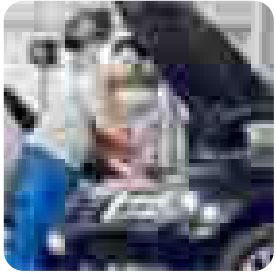
General Wear & Tear

Gear Box Synchromesh 4x4 High and Low



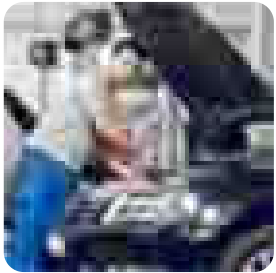
Not Applicable

Speedo / odometer



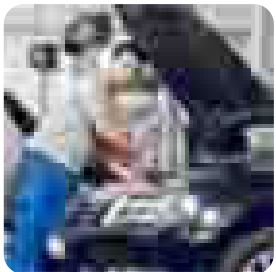
Minor Leak

Trip meter / cruise control



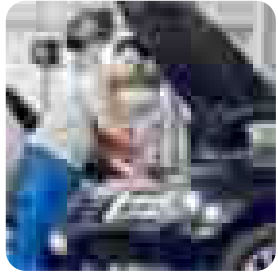
Major Leak

Turbo charger / super charger



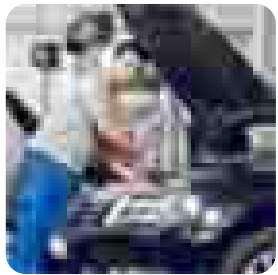
Damaged Area

Engine performance / engine smoke



Requires Attention

Hybrid / electric battery operation



Unhealthy Condition

Speed limit when tested

Lorem Ipsum is simply dummy text.

Is 4WD vehicles tested off road?

Lorem Ipsum is simply dummy text.

Vehicle general drivability

Lorem Ipsum is simply dummy text.

Notes

Lorem Ipsum is simply dummy text of the printing and typesetting industry.

Vehicle Condition Report

Condition Report



Cosmetic Panel / paint = Blue

Minor Scratches / Dents = Yellow

Damaged / Dented = Black

Previous Body Repairs = Red

Rust = Orange

Please Note:

This inspection will not make comment on the alignment of any parts or body panels and will not be able to detect if any part of the vehicle is bent or out of its original shape. If you have any possible concerns with these items, please arrange an inspection by a registered smash repairer. SafeBuy will note larger type damage and previous accident repairs to all vehicles when conducting a premium inspection.

However, smaller shopping size dents, scratches or hail damage will not be noted or guaranteed due to our mobile service encountering dirty, unwashed and wet vehicles and lighting conditions on site. It is the purchaser's responsibly to re - check the inspected vehicle personally, before settlement.

Notes

Lorem Ipsum is simply dummy text of the printing and typesetting industry.

Inspection Report Summary

Body Rating

Lorem Ipsum is simply dummy text.

Mechanical rating

Lorem Ipsum is simply dummy text.

Interior rating

Lorem Ipsum is simply dummy text.

Summary of above rating

Lorem Ipsum is simply dummy text.

This inspection indicates the general vehicle condition is

Good Condition

This vehicle has been assessed taking into consideration the kms displayed, the vehicle age and the condition of the vehicle.

Terms & Conditions:

All vehicles are inspected as presented. In many cases vehicles are dirty / unwashed etc. Please ensure to read this report in full including any added notes which may point out any repairs, servicing, faults or problems. Further explanation of the report is made by speaking directly with your inspector, whom will phone you after the inspection or by the end of that working day. If you were not available to take the call, please phone the inspector as a verbal explanation of the inspection report is important.

BEWARE: Always check for a clear title before purchasing a vehicle especially on private sales.

Our report is not a roadworthy or safety certificate of any kind, which may be needed in some states for registration purposes.

The vehicle's authenticity / verification is solely the responsibility of the buyer.

Items on any report only be tested if applicable to vehicle.

Vin Number and engine number will only be recorded from the engine if clearly visible, otherwise copied from registration records.

Inspector follows report checklist, further inspection may be recommended for any other concern found. Buyers to check with the relevant authorities of Australia wide for any type of write - off SafeBuy gives no guarantees on previous repair history nor is the vehicle's Body structure damage or components A final visual inspection of a vehicle at the time of sale transaction is the responsibility of the buyer.

Safe buy will not be liable for any dents/ damage or condition change after the inspection report. Please have a report handy to telly condition.

Otherwise contact SafeBuy for assistance.

We do not check or decode tyres fitted, age, load rating and the manufacturer's specified oils, fluids and coolants. Inspection and assessment by only visual and noise detection no adjustment been made, nor components dismantled to confirm diagnosis. Whilst every care is taken SafeBuy will not be responsible for any intermittent problem which does not appear during the inspection.

The condition indicated on this report. If there is a concern with the accuracy of the report contact SafeBuy prior to any work being carried out.

This report is not a warranty or guarantee, it is only intended for the person mentioned on report and it is not to be relied upon by any other person(s) or purpose.

WHAT WE DON'T CHECK:

Fuel and oil consumption, timing belts or chain, alarm/ security system, trip meters / computers, Head units, navigation / GPS, TV, cassette or disc player, auto wipers and adaptable lights. Water leaks. We don't check any Filters including diesel particulate filters and catalytic converters.

Note:

Please refer to manufacturer's specifications for replacement of Timing belts, and filters in service records. We do not inspect the engine internals, which include fuel injectors, EGR valves nor how much sludge or carbon build up. Which normally found in diesel engines, especially in the high kilometer's vehicles

Appendix

Photo

